

FOR SALE

Northside Business Park Commercial Industrial Land



Acres of Commercial Land For Sale:

3.3

Sale Price:

\$24,750

Lot 3-20 PID#15895998 Northside Business Park

Property Information:

- Lot Frontage: 139.1ft
- Lot Shape: Rectangle
- Lot Dimensions: Depth of 711.7-776.3ft; Width of 139.1ft-230ft *
- Sanitary Sewer: Serviceable, 10" sewer lateral in the street
- Municipal Water: Serviceable, 14" water lateral in the street
- Stormwater: No
- Road access is Eveleigh Drive
- Easements: Yes
- Electricity: 25kva, 3 phase power available from Circuit 35-405 at Eveleigh Drive
- High Speed Internet Access: Yes
- OP Designation - Business Park Industrial
- [Land use By-law of the Cape Breton Regional Municipality](#)
- Zoned in Northside Business Park

*The setback from any lot parcel boundary shared with a public street/road for a main building must be more than 10 feet. The setback from all other lot parcel boundaries must be more than 4 feet.

All dimensions and areas are approximate and vary.

Area Description:

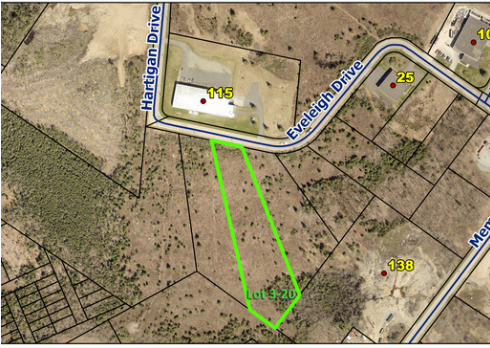
The Northside Business Park (NBP) offers municipal-serviced lands ready for your business. It is located in the North Sydney/Sydney Mines area, in an area highlighted by both industrial and commercial uses.

Contact:

CBRM Economic Development Officer
Lan Zheng, MBA, BA, CITP
Cape Breton Partnership
lan@capebretonpartnership.com
C: (902)-217-3065 T: (902)-562-9653

Last Update:

August, 2022



This information has been compiled by the Cape Breton Partnership in collaboration with the Cape Breton Regional Municipality through the CBRM Regional Enterprise Network. For more information go to <https://capebretonpartnership.com/initiative/cape-breton-regional-municipality-regional-enterprise-network/>