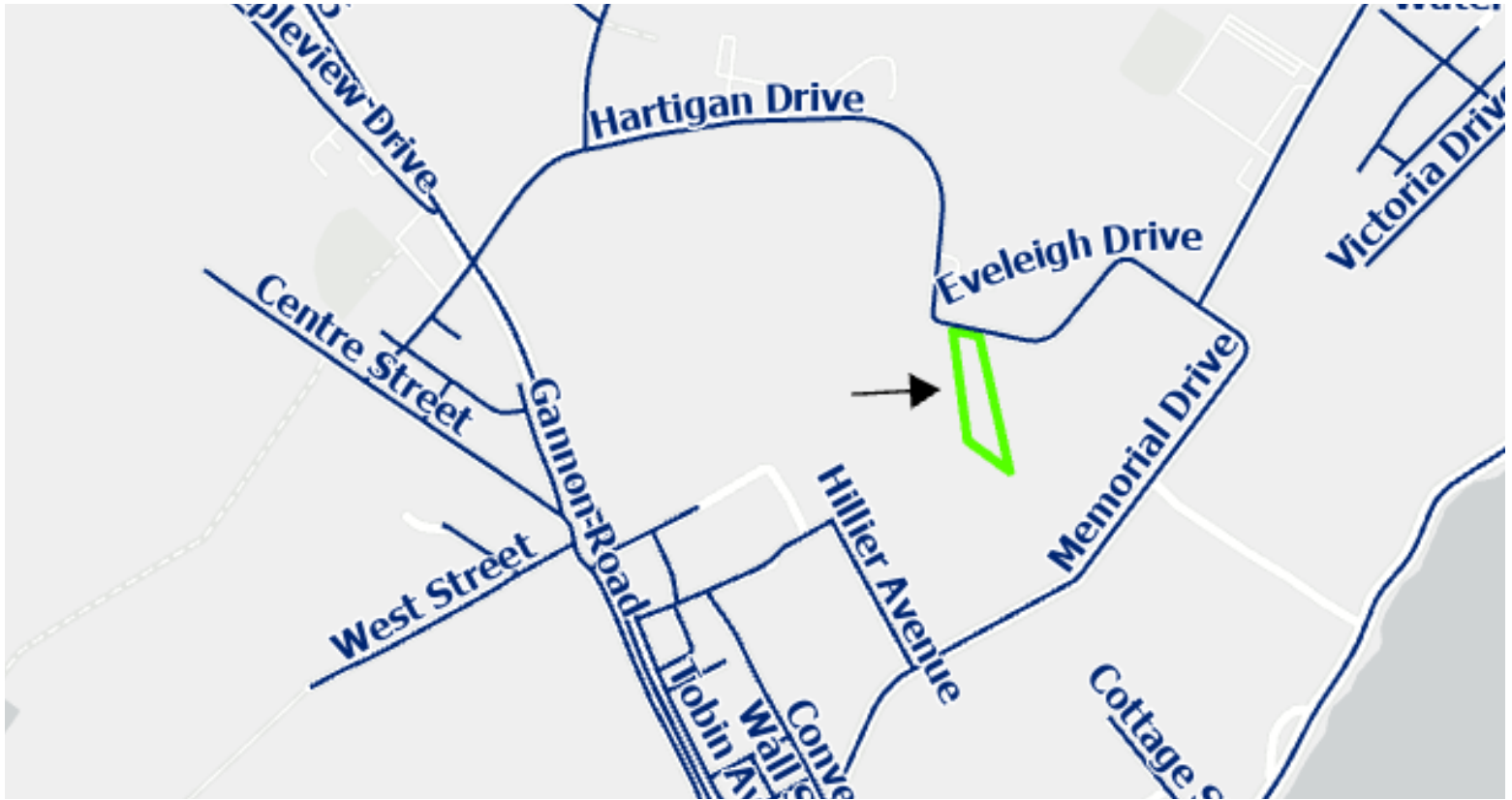


FOR SALE

Northside Business Park Commercial Industrial Land



Acres of Commercial
Land For Sale:

2.7

Sale Price:

\$20,250

Lot 2-20 PID#15895980 Northside Business Park

Property Information:

- Lot Frontage: 150ft
- Lot Shape: Rectangle
- Lot Dimensions: Depth of 621 - 776.3ft; Width of 150 - 293ft*
- Sanitary Sewer: Serviceable, 10" sewer lateral in the street
- Municipal Water: Serviceable, 14" water lateral in the street
- Stormwater: No
- Road access is at Eveleigh Drive
- Easements: Yes
- Electricity: 25kva, 3 phase power available at Circuit 3S-405 at Eveleigh Drive
- High Speed Internet Access: Yes
- OP Designation - Business Park Industrial
- [Land use By-law of the Cape Breton Regional Municipality](#)
- Zoned in Northside Business Park

*The setback from any lot parcel boundary shared with a public street/road for a main building must be more than 10 feet. The setback from all other lot parcel boundaries must be more than 4 feet.

All dimensions and areas are approximate and vary.

Area Description:

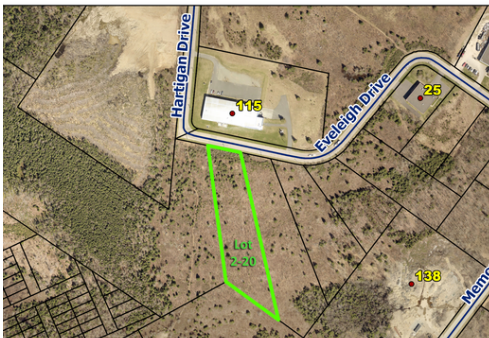
The Northside Business Park (NBP) offers municipal-serviced lands ready for your business. It is located in the North Sydney/Sydney Mines area, in an area highlighted by both industrial and commercial uses.

Contact:

CBRM Economic Development Officer
Lan Zheng, MBA, BA, CITP
Cape Breton Partnership
lan@capebretonpartnership.com
C: (902)-217-3065 T: (902)-562-9653

Last Update:

September 12, 2022



This information has been compiled by the Cape Breton Partnership in collaboration with the Cape Breton Regional Municipality through the CBRM Regional Enterprise Network. For more information go to <https://capebretonpartnership.com/initiative/cape-breton-regional-municipality-regional-enterprise-network/>